

Works With Savant Installers

Important Safety Information – Read First!

Before installing, configuring, or operating any equipment, all relevant technical documentation must be read, understood, and followed.

Savant technical documentation may contain important product-specific installation, mounting, and safety instructions, and can be accessed through the Savant Store.

Scan the QR code or visit the URL below, enter the relevant product name or SKU in the Search Savant prompt, and select the product purchased to find documents, specifications, and more.

https://store.savant.com/DefaultStore/ccrz__HomePage



Additional Information and Warnings

FCC Compliance Statement Compliance Notice:

▲ Warning: Changes or modifications to this unit not expressly approved by the party responsible for compliance could void the user's authority to operate the equipment.

Note: This equipment has been tested and found to comply with the limits for a Class B digital device, pursuant to Part 15 of the FCC Rules. These limits are designed to provide reasonable protection against harmful interference in a residential installation. This equipment generates, uses, and can radiate radio frequency energy and, if not installed and used in accordance with the instructions, may cause harmful interference to radio communications.

However, there is no guarantee that interference will not occur in a particular installation. If this equipment does cause harmful interference to radio or television reception, which can be determined by turning the equipment off and on, the user is encouraged to try to correct the interference by one or more of the following measures:

- Reorient or relocate the receiving antenna.
- Increase the separation between the equipment and receiver.
- Connect the equipment into an outlet on a circuit different from that to which the receiver is connected.
- Consult the dealer or an experienced radio/TV technician for help.

The device must not be collocated or operating in conjunction with any other antenna or transmitter.

This device complies with Part 15 of FCC Rules. Operation is subject to the following two conditions:

(1) this device may not cause harmful interference, and (2) this device must accept any interference received, including interference that may cause undesired operation.

GE is a trademark of General Electric Company. Used under trademark license. Amazon, Alexa, and all related logos are trademarks of Amazon.com, Inc. or its affiliates. Google and other related marks and logos are trademarks of Google LLC.

RF Exposure Information:

▲ Caution: To maintain compliance with the FCC's RF exposure guidelines, place the product at least 20cm from nearby persons.

IC Statement

This device complies with RSS247 of Industry Canada. Cet appareil se conforme à RSS247 de Canada d'Industrie.

This device complies with Industry Canada license-exempt RSS standard(s).

Operation is subject to the following two conditions:

(1) this device may not cause interference, and (2) this device must accept any interference, including interference that may cause undesired operation of the device. Appareils radio exempts de licence.

Son fonctionnement est sujet aux deux conditions suivantes: (1) le dispositif ne doit pas produire de brouillage préjudiciable, et (2) ce dispositif doit accepter tout brouillage reçu, y compris un brouillage susceptible de provoquer un fonctionnement indésirable.

This equipment complies with IC RSS-102 radiation exposure limits set forth for an uncontrolled environment.

This transmitter must be installed to provide a separation distance of at least 20cm from all persons and must not be collocated or operating in conjunction with any other antenna or transmitter.

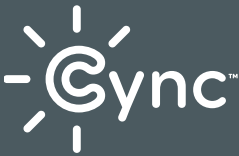
Cet équipement est conforme aux limites d'exposition aux rayonnements IC RSS-102 définies pour un environnement non contrôlé.

Cet émetteur doit être installé pour fournir une distance de séparation d'au moins 20 cm de toutes les personnes et ne doit pas être colocalisé ou fonctionner en conjonction avec une autre antenne ou émetteur.

- ▲ CAUTION** To reduce the risk of fire, electric shock, or injury to persons:
- Use only insulated staples or plastic ties to secure cords.
 - Route and secure cords so that they will not be pinched or damaged when the cabinet is pushed to the wall.
 - Not intended for recessed installation in ceilings, or soffits
 - The National Electrical Code (NEC) does not permit cords to be concealed where damage to insulation may go unnoticed. To prevent fire danger, do not run cord behind walls, ceilings, soffits, or cabinets where it may be inaccessible for examination. Cords should be visually examined periodically and immediately replaced when any damage is noted.

Like your new Undercabinet Fixture? Share your experience!

Leave a review where you purchased the product.



CYNC reveal® Full Color Undercabinet Fixture Installation Guide



Getting Started

Determine location, decide direct wire or plug in, and complete the installation

Add Fixture to the Cync App, powered by Savant or Matter-compatible smart home app

Set up your Amazon Alexa or Google Home voice assistant (optional)

For set up help, call 1-844-302-2943 or visit cyncsupport.gelighting.com



Let's Do It

Included:

Fixture

Linking Cable

60" Power Cord

Strain Relief*

Recessed Connector

Knock-Out Hole Cover

Screw Hole Covers

* The strain relief is capable of being used as fixed unit (luminaire) when used with the Convertible LED Portable Luminaire.

You'll need:

1/8th Drill Bit

Phillips Head Screwdriver

Wire Strippers

▲WARNING: If you do not want to use the knock-out any longer, please use the knock-out hole cover to cover the hole.

Specifications

| Model | Input Voltage (Vac, Hz) | Current (mA) | Wattage (W) |
|-------------------------------------|----------------------------|-----------------|----------------|
| Full Color 12" Undercabinet Fixture | 120/60 | 115 | 13 |
| Full Color 18" Undercabinet Fixture | 120/60 | 170 | 19 |
| Full Color 24" Undercabinet Fixture | 120/60 | 210 | 24 |

Dimming Capability

NOT FOR USE WITH DIMMER SWITCHES.

Compatible with only Cync smart dimmers that provide dimming at the switch or through the Cync App.

STOP Before you begin: Read these instructions completely and carefully.

▲ WARNING: RISK OF ELECTRIC SHOCK

Risk of fire or electric shock. Installation requires knowledge of luminaire electrical systems. If not qualified, do not attempt installation. If uncertain, contact a qualified electrician.

- To prevent wiring damage or abrasion, do not expose wiring to edges of sheet metal or other sharp objects.
- These products are intended to be used in dry or damp locations.

Prepare Electrical Wiring

ELECTRICAL REQUIREMENTS

The LED fixture must be supplied with 120VAC 60Hz

GROUNDING INSTRUCTIONS

The grounding and bonding of the overall system shall be done in accordance with National Electric Code (NEC) and local codes.

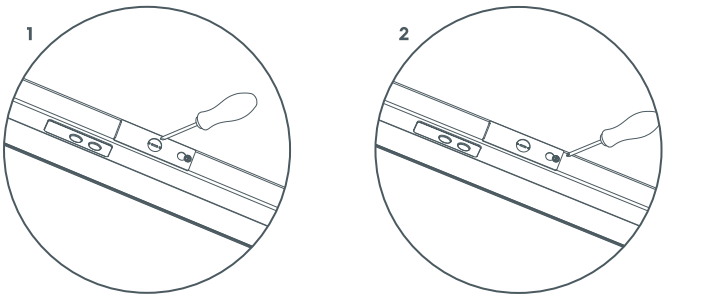
DIRECT WIRE INSTALLATION

BEFORE YOU DO ANYTHING: Step 1 Turn Off The Power!

Turn off power source at the main circuit breaker or fuse box.

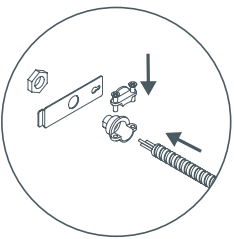
Step 2 Remove knock-out

1. Place a screwdriver into the center, carefully flexing back and forth until removed. Do not leave the removed metal circle inside the fixture.
- ▲ Warning:** Once the knock-out is removed, the luminaire can only be hardwired and can no longer be plugged in.
2. Loosen the screw and remove connection cover.



Step 3 Mount strain relief to the connection cover

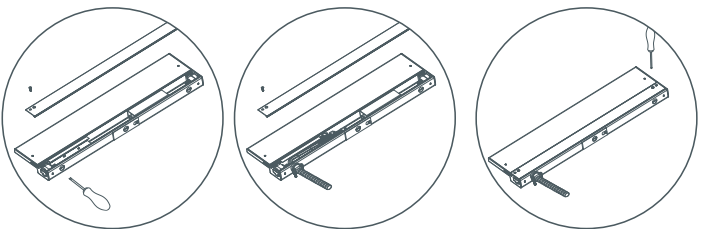
1. Securely tighten nut. Strain relief should be on the outside of the connection cover with the nut on the inside. Push supply cable through the strain relief ensuring that roughly 3" of cable is through the fitting. Tighten screws around supply cable.



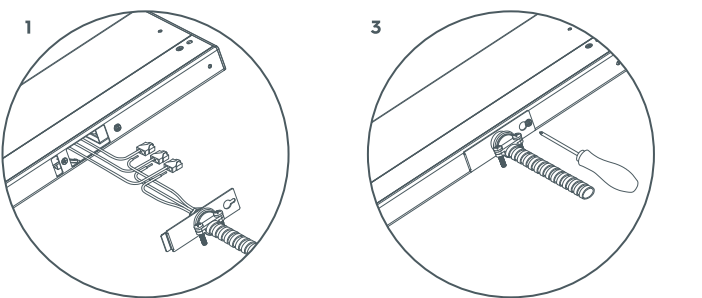
Step 4 Connect wires

1. Inside fixture, there are three wires with a wire connector fitted to each end. Carefully pull these out of fixture. Do not pull with excessive force.
2. Insert each of the three wires from the supply cable into each of the three wire connectors with their respective color wires. Make sure that all wires are securely gripped, and no bare wires are exposed.

Note: Back plate may need to be removed for direct wire method for easier installation when using a thicker gauge wire.

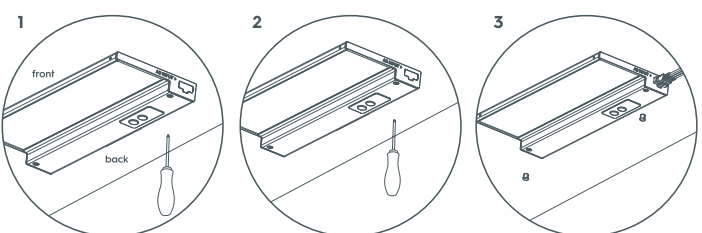


- Note:** Strip supply cable wires with wire strippers to expose 3/8"-7/16" of bare metal for connection.
3. Gently push the wires back inside of the fixture. Secure the connection cover back onto the fixture assembly.
- ▲ Warning:** Do not use power cord when also direct wiring the fixture! Use only one method to power the fixture.



Step 5 Install fixture

1. Place the fixture in the desired position within 5' of an outlet. Ensure there is enough space between any cabinet edges and fixture ends for the cord end. It may be required to pre-drill a pilot hole for the screws using a 3mm or 1/8th inch size drill bit.
 2. Mount the fixture using a Phillips head screwdriver, fully seating the pre-installed mounting screws. Provided screws are suitable for cabinet bottoms 3/8" or thicker. It may be required to pre-drill a pilot hole for the screws.
- ▲ Warning:** If using a drill, set it to a medium speed. Ensure the bit is fully engaged with the screw to avoid stripping. Start slowly until the screw bites into the wood.
3. Push in the screw hole covers, covering the two exposed screws. When direct wiring and not linking fixtures, make sure to not remove the plastic receptacle cap on each end of the fixture—leave them in place. Turn on the electricity at the circuit breaker or fuse box and verify that the fixture functions properly.



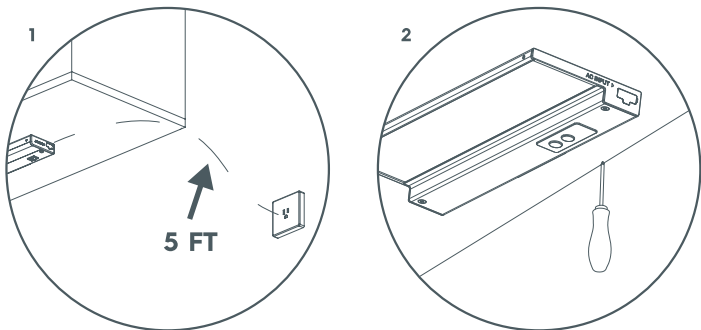
PLUG-IN INSTALLATION

BEFORE YOU DO ANYTHING: Step 1 Turn Off The Power!

Turn off power source at the main circuit breaker or fuse box.

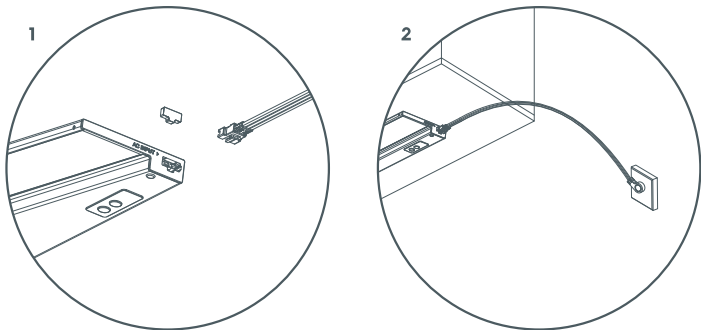
Step 2 Position fixture

1. Locate the position to mount the Undercabinet Fixture. Fixture should be mounted within 5' of an outlet.
 2. Place the fixture in the desired position. Mount the fixture using a screwdriver, fully seating the pre-installed mounting screws. Provided screws are suitable for cabinet bottoms 3/8" or thicker. It may be required to pre-drill a pilot hole for the screws.
- ▲ Warning:** If using a drill, set it to a medium speed. Ensure the bit is fully engaged with the screw to avoid stripping. Start slowly until the screw bites into the wood.



Step 3 Connect fixture to power source

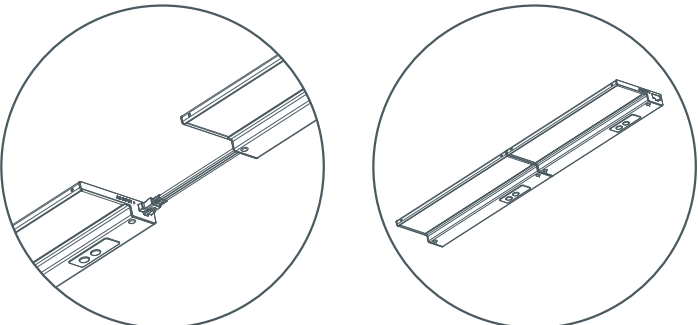
1. Remove the plastic quick connect cap that covers the INPUT port. Store the cap in a safe place for potential future use. Insert the power cord quick connector into the INPUT port.
2. Plug in the power cord to an electrical outlet. Secure cord using cable clips, making sure to keep cord snug to the mounting surface.
3. Push in the screw hole covers, covering the two exposed screws. Turn on the electricity at the circuit breaker or the fuse box and verify that the fixture turns ON.



CONNECTING FIXTURES

Joining multiple fixtures

1. For multiple fixture installation, make sure all fixtures have been securely mounted. Fixtures are linkable up to a maximum of 10 units and a wattage maximum of 220W.



2. Remove the plastic quick connect cap that covers the INPUT/OUTPUT port. Store the cap in a safe place for potential future use.
3. Using provided jumper cord or recessed connector, link the fixtures together starting with the INPUT/OUTPUT port on the powered fixture and connecting it to the INPUT port on the non-powered fixture. The linking cable and flushed connector are designed to only connect one way.
4. Ensure plastic quick connect caps are installed in all open parts at the completion of installation.

Note: Fixtures can be controlled individually or grouped together in the Cync App whether they are joined together or powered independently.

Congratulations!

You've completed the Undercabinet Fixture installation.

Next, refer to the Quick Start Guide included in the package for app set up.

Matter vs. Cync App

You may set up your bulb through CYNC or Matter, but not both. To switch after setting up, you will need to reset the bulb and set up again.

NOTE: You may see a "set up using Matter" notification on your phone. To set up in the Cync App, powered by Savant, dismiss the notification.

PK-00112537-1